

Aluminum full-view Doors

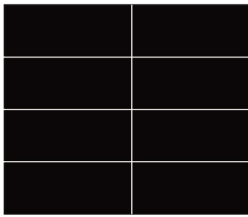
Basic Tech Parameters

Max width	18 '(5486mm)	Springs	10,000 cycles
max height	14 '(4267mm)	Track	provide track as recommended by manufacturer to suit loading required and clearances available
Door assembly	Stile and rail assembly of aluminum alloy 6063-T6	Warranty	Two Year Limited
Safe	Anti-fall (vertical lifting), Widened profile , Widened hinges + long-handle wheels handrail rails, airbags, heavy-duty hinges		
Stiles	Left,Right and upper frame upright: 120mm Horizontal column: 54.5mm Vertical column: 74.2mm		
Lifting method	Sectional lifting		

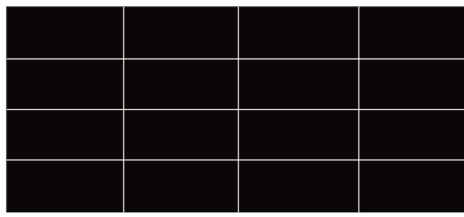
Options

- Springs :25,000, 50,000, 75,000 or 100,000 cycles
- Weather stripping: jamb and header seals
- Powder coat track

Panel styles

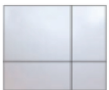


Exterior View 8x7

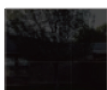


Exterior View 16x7

Glass and colors Options



Opaque White



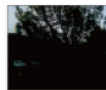
Opaque Black



Mirrored Gray



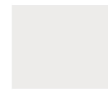
Mirrored Bronze



Traslucent Black



Black

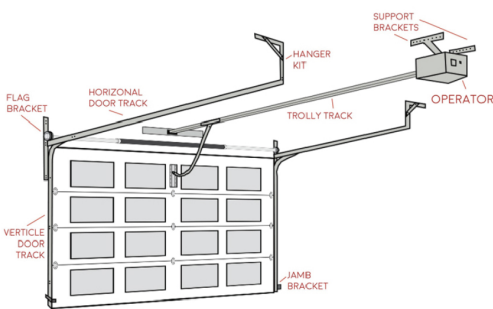


White



Customize

Main Components



8ft x7ft , 9ft x7ft Garage Door

- 10 - 2" Nylon Glide Garage Door Roller
- (Based on door type configuration) -Hinges
- 2 Ea - #4 and #5 Jamb Brackets
- 1 Pair - Torsion Flag Brackets
- 1 Pair - Milford Pin Bottom Brackets
- 2 - Adjustable Top Roller Brackets
- 1 Pair - Torsion Spring Drums
- 1 Pair - Torsion End Bearing Plate Flanged
- 1 - Center Anchor Bracket
- 1 Pair - Torsion Cables
- 1 - Step Plate Lift Handle Kit
- 1 - Center Support Bearing
- All Fasteners needed for each component!

16ft x7ft , 18ft x7ft Garage Door

- 10 - 2" Nylon Garage Door Roller
- (Based on door type configuration) -Hinges
- 2 Ea - Jamb Brackets
- 1 Pair - Torsion Flag Brackets
- 1 Pair - Milford Pin Bottom Brackets
- 2 - Adjustable Top Roller Brackets
- 1 Pair - Torsion Spring Drums
- 1 Pair - Torsion End Bearing Plate Flanged
- 1 - Center Anchor Bracket
- 1 Pair - Torsion Cables
- 1 - Step Plate Lift Handle Kit
- 1 - Center Support Bearing
- All Fasteners needed for each component!

Aluminum Door System

Aluminum full-view Doors



FOR AUTO DEALERSHIPS , RESTAURANTS, GARAGE AND ANY APPLICATION WHERE THE DOOR NEEDS TO INTEGRATE SEAMLESSLY WITH AESTHETICS OF THE BUILDING

- Frameless design with aluminum alloy frame and large-area glass panel for maximum daylighting.
- 2mm thick Widened Frame Profiles aluminum profile with reinforced structure ensures durability and safety.
- Integrated design of reinforcing ribs and horizontal frame (suitable for doors over 10 feet wide).
- Effective air leakage reduction achieved by tight sealing between sections and flexible bottom weatherstripping.

